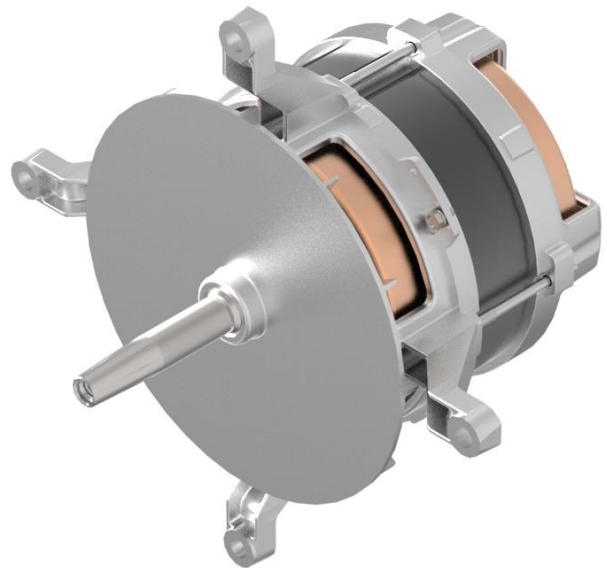
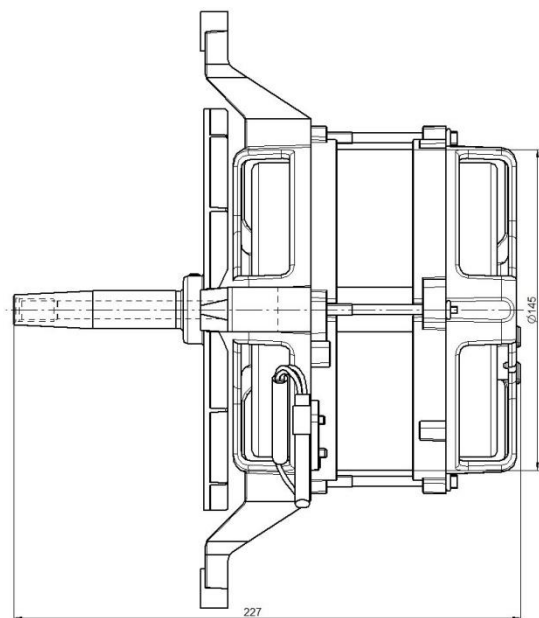


haventic compact L9

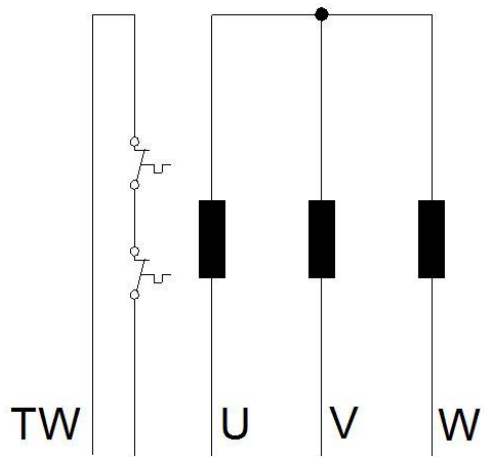


Technical data

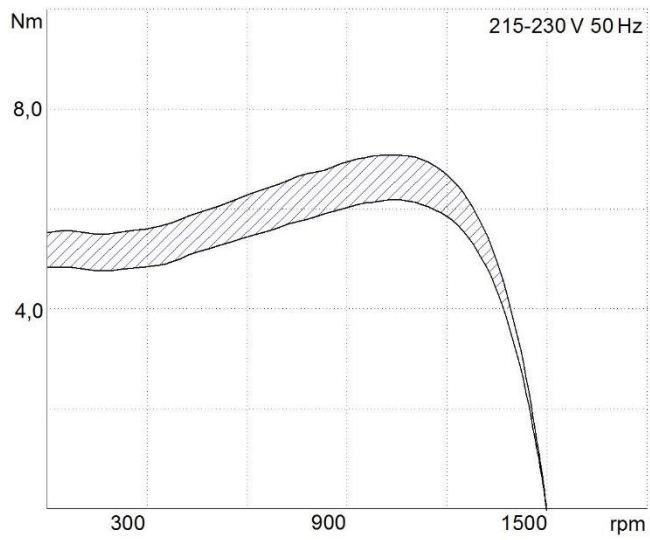


Description	Specification
Voltage	215–240 V/346–440 V
Frequency	50/60 Hz
Therm. Protector	Internal or external
Degree of protection	IP00
Duty up to 60° C	Higher on request
Insulation class	F
Phase	1~/3~
Life time	Depends on application and ambient temperature
Direction of rotation	CW/CCW
Shaft design	Optional
Mounting – front/foot	Front
Output	0,35 kW
Connection (customisable)	Optional
Capacitor (customisable)	Optional
Approvals	On request (VDE, UL, CSA)

Wire diagram



Curve



Notes

