

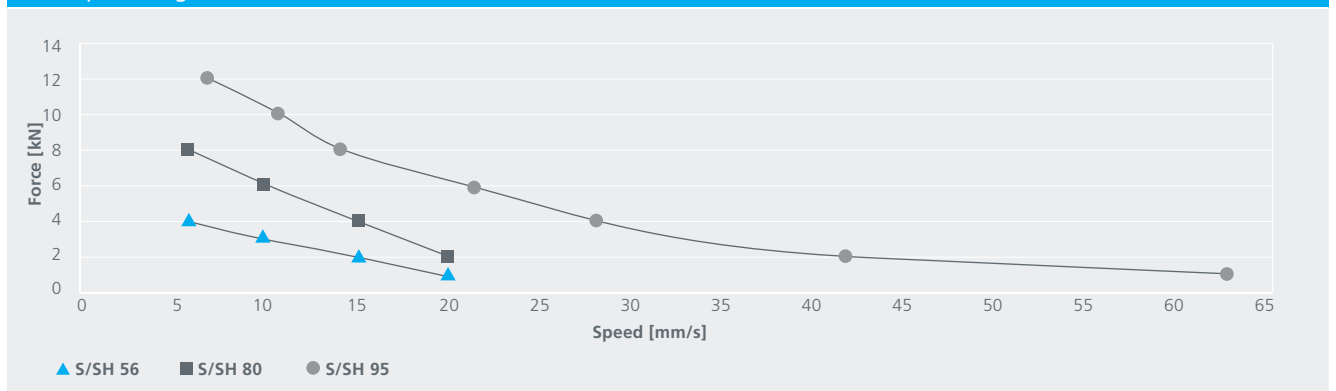
# hamatic compact data sheet



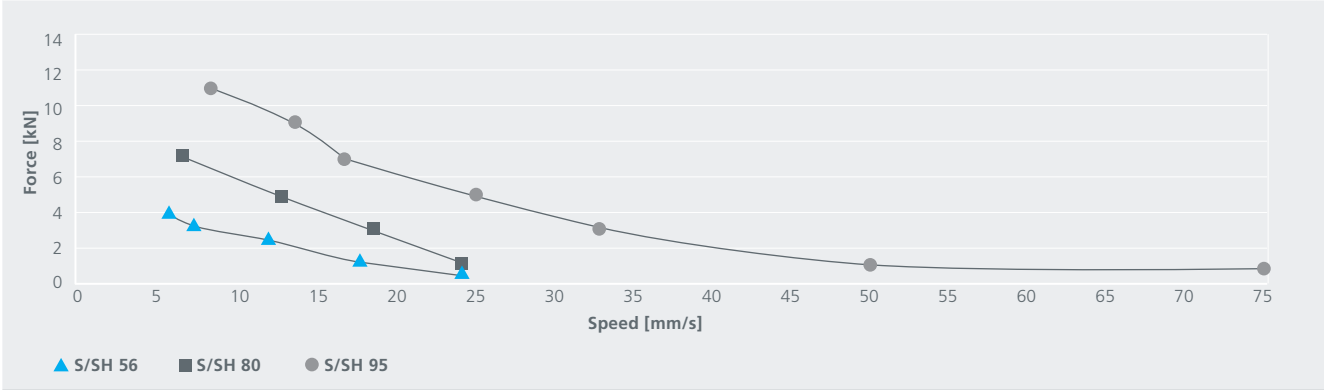
## Technical data

	S 95/ SH 95	S 80/ SH 80	S 56/ SH 56
Mains voltage	1~ 100 / 115 / 230 V AC $\pm 10\%$ 50/60 Hz 3~ 400/480 V $\pm 10\%$ 50/60 Hz 36 V DC via hatronic compact frequency inverter DC-FI	1~ 100 / 115 / 230 V AC $\pm 10\%$ 50/60 Hz 36 V DC via hatronic compact frequency inverter DC-FI	
Spindle length S	According to customer requirements		
Stroke SH	100, 200, 250, 300 and 500 mm, others on request		
Duty cycle	25 s on / 400 s off		
Control options	<ul style="list-style-type: none"> <li>· Direct control via rated voltage</li> <li>· Via hatronic control CTRL</li> <li>· Via hatronic compact frequency inverter DC-FI</li> </ul>		
End position limitation	On request for SH-versions		
Position detection	Hall sensor on request		

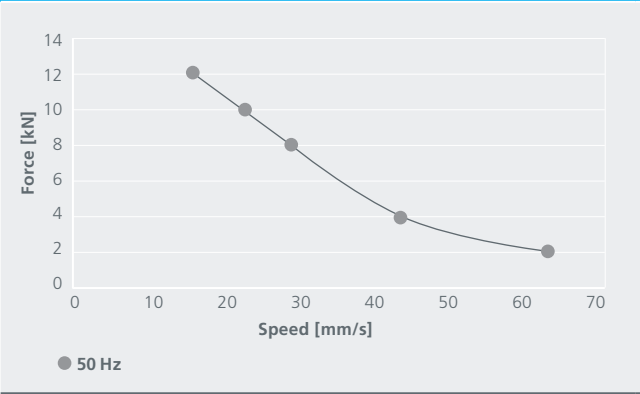
Force-speed diagram 100/115/230 V 1~ 50 Hz



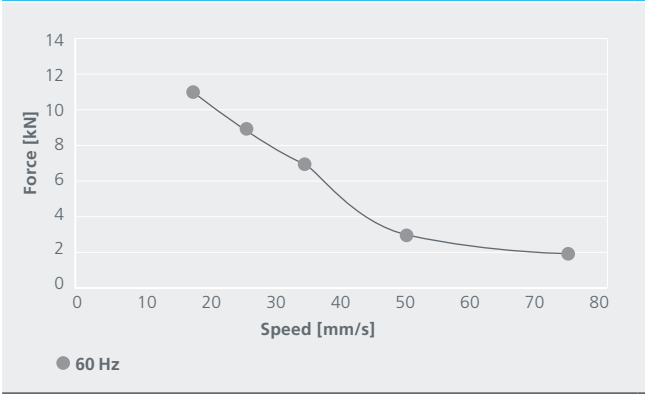
Force-speed diagram 100/115/230 V 1~ 60 Hz



Force-speed diagram S / SH 95 400/480 V 3~ 50 Hz

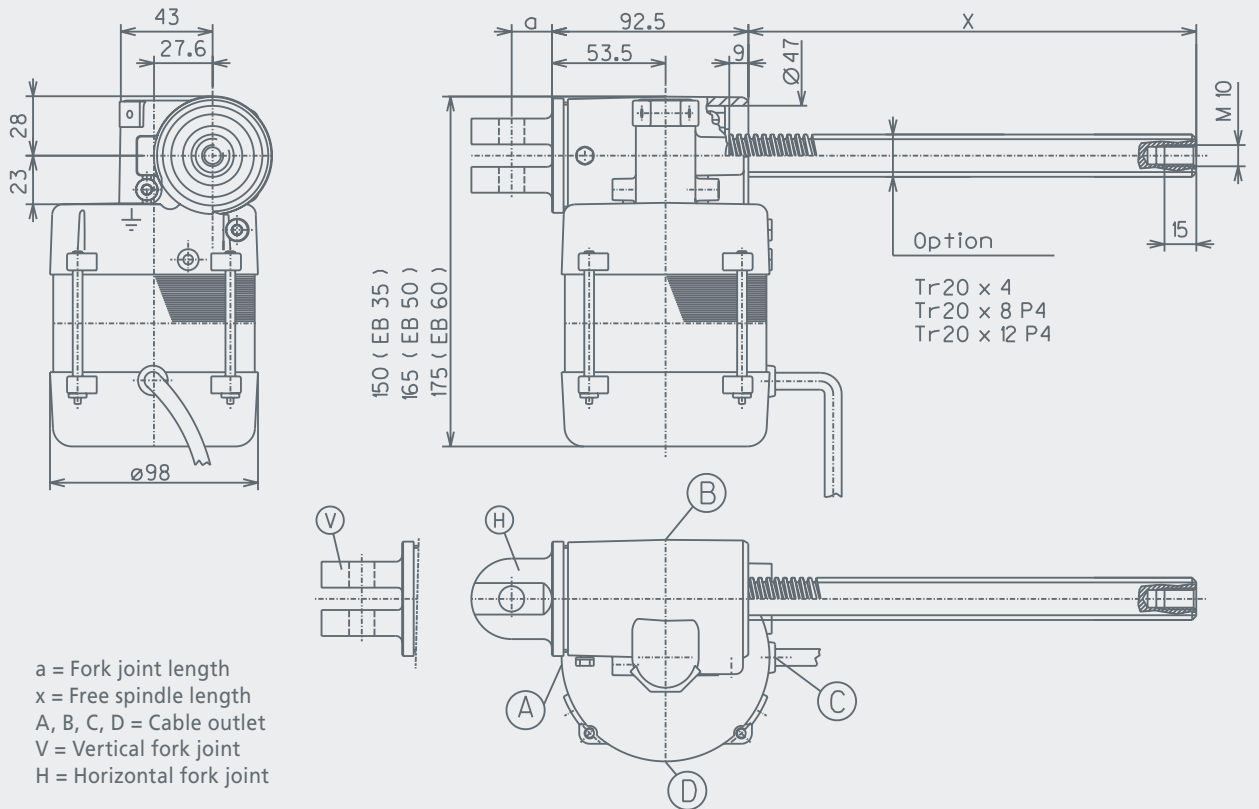


Force-speed diagram S / SH 95 400/480 V 3~ 60 Hz

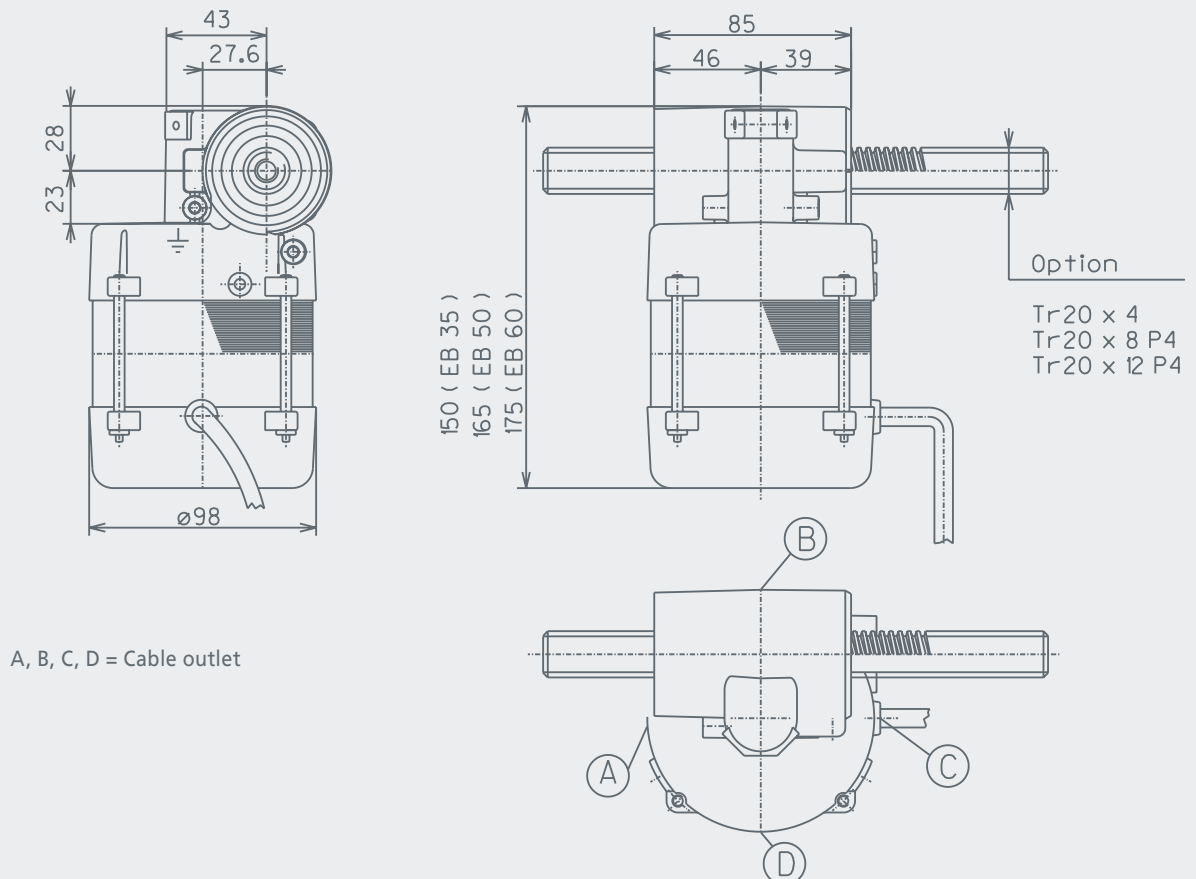


# Dimension sheets

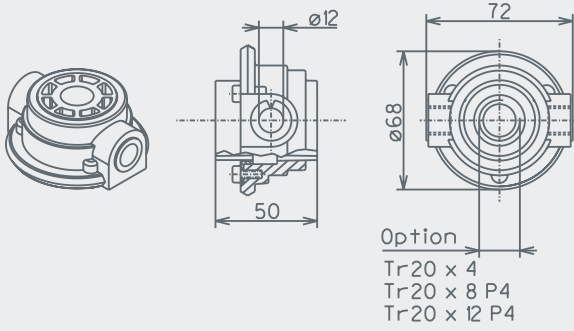
S 95



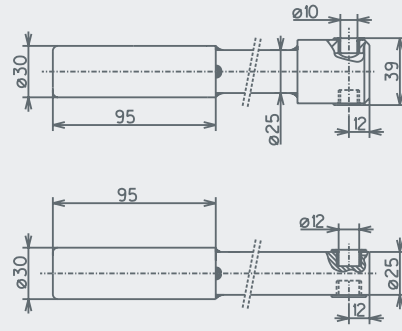
S 95 with continuous spindle



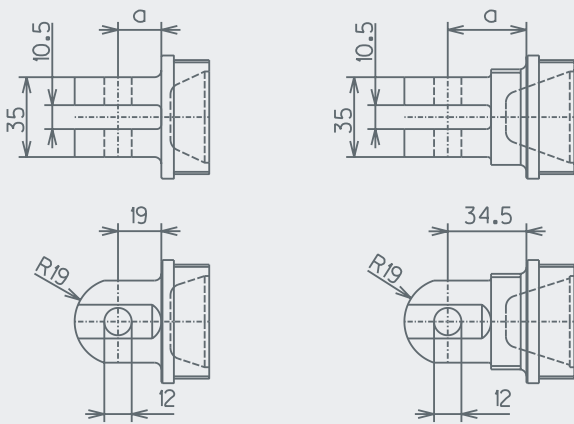
Option: Spindle nut S 95



Option: Travel tube S 95

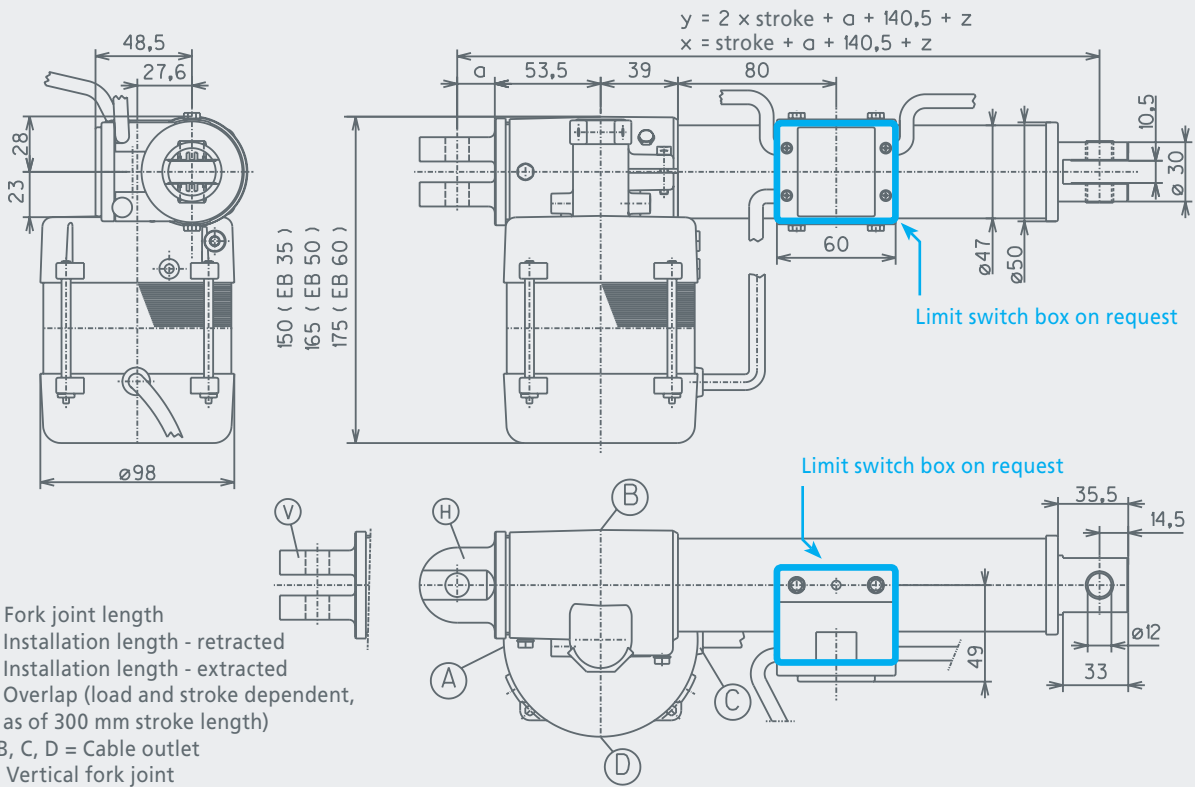


Option: Fork joint S 95 / SH 95

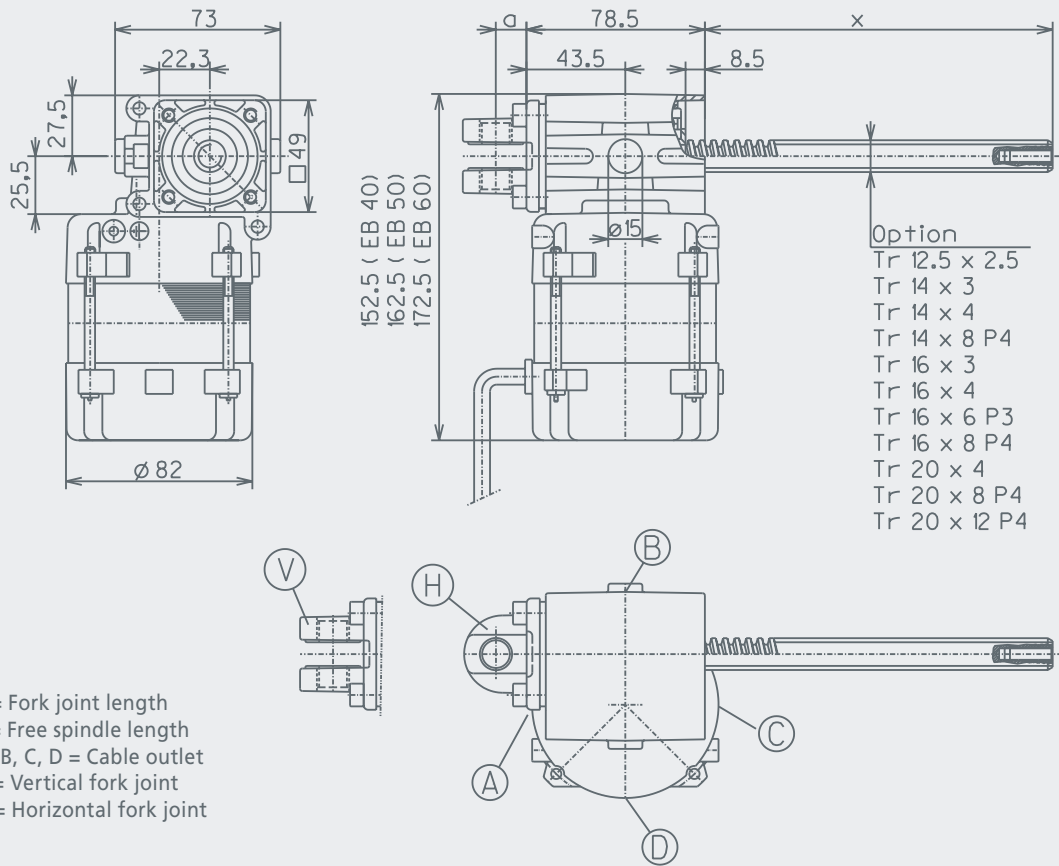


a = Fork joint length

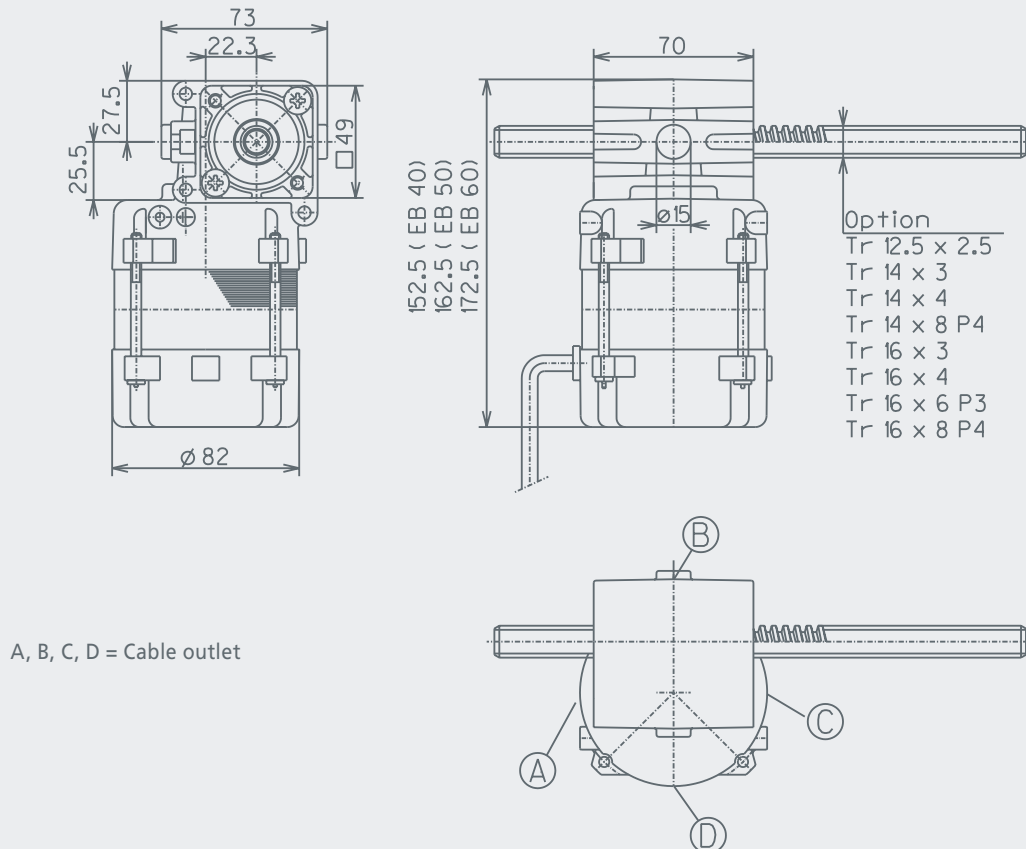
SH 95



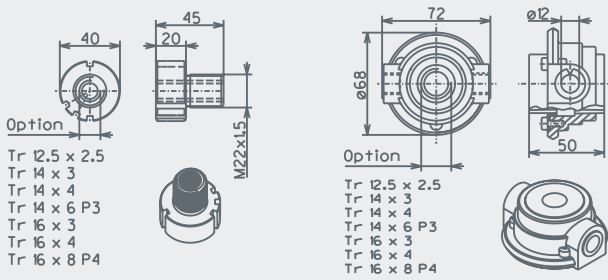
a = Fork joint length  
 x = Installation length - retracted  
 y = Installation length - extracted  
 z = Overlap (load and stroke dependent, as of 300 mm stroke length)  
 A, B, C, D = Cable outlet  
 V = Vertical fork joint  
 H = Horizontal fork joint



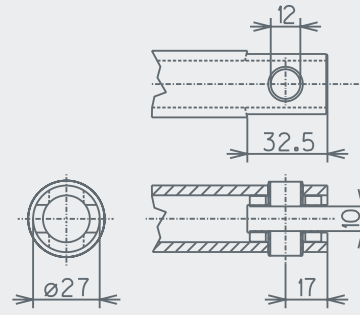
S 80 with continuous spindle



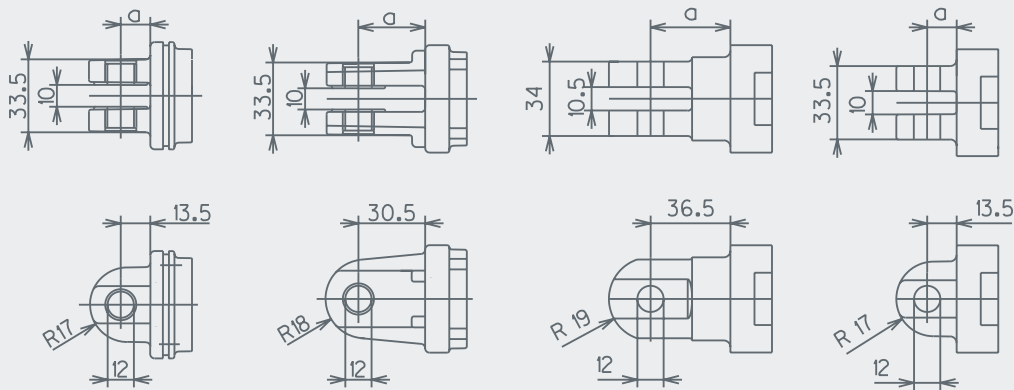
Option: Spindle nut S 80



Option: Travel tube S 80

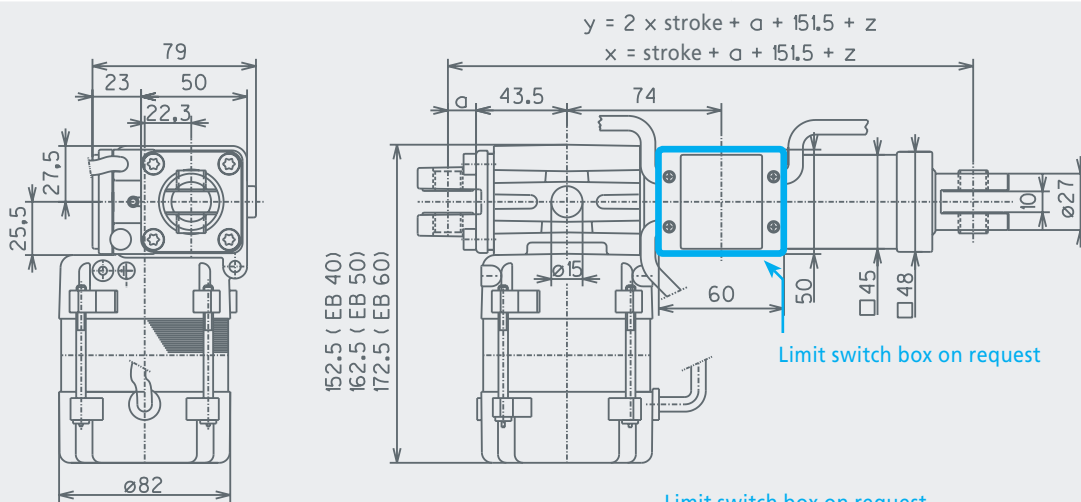


Option: Fork joint S 80 / SH 80

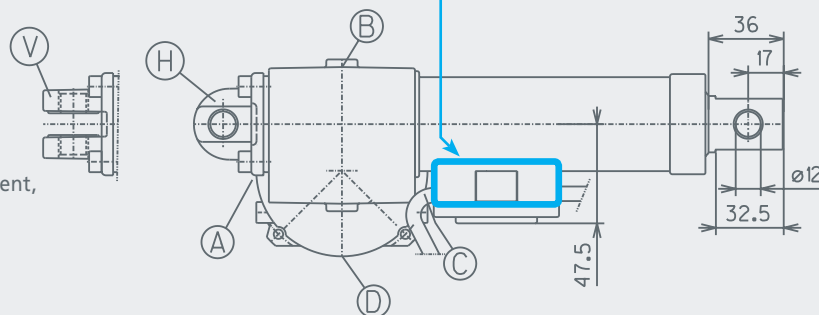


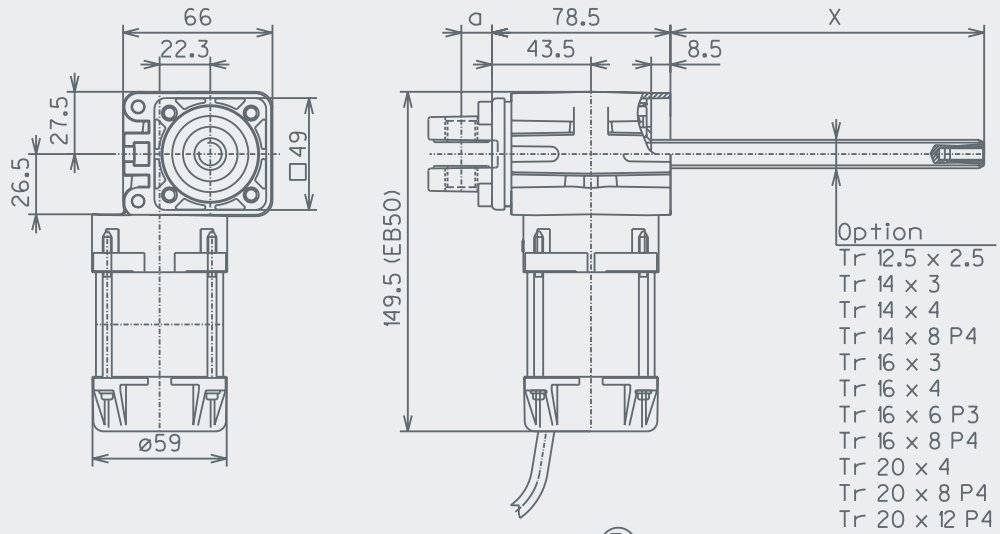
a = Fork joint length    Zinc-diecasting    Aluminium-diecasting    Polyamid    Polyamid

SH 80

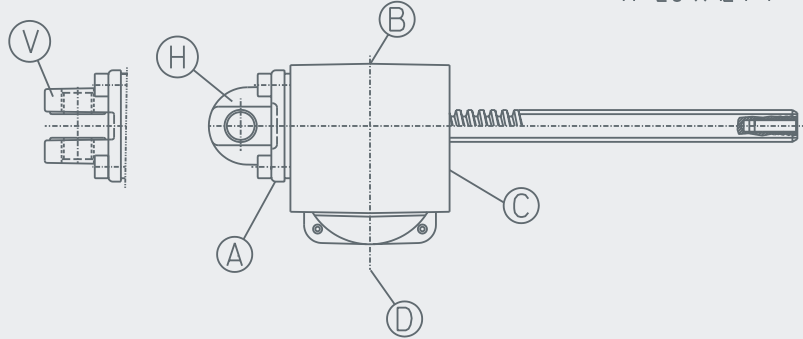


a = Fork joint length  
 x = Installation length - retracted  
 y = Installation length - extracted  
 z = Overlap (load and stroke dependent, as of 300 mm stroke length)  
 A, B, C, D = Cable outlet  
 V = Vertical fork joint  
 H = Horizontal fork joint

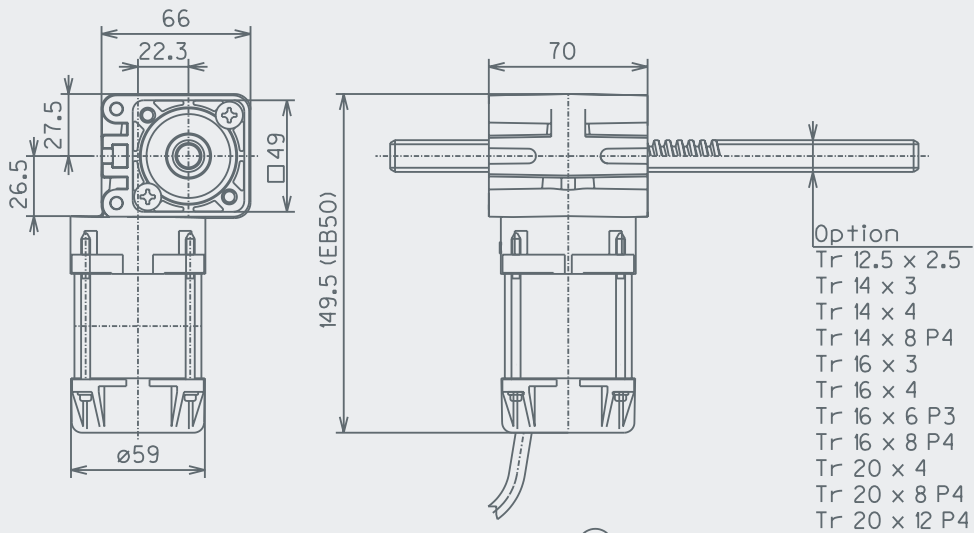




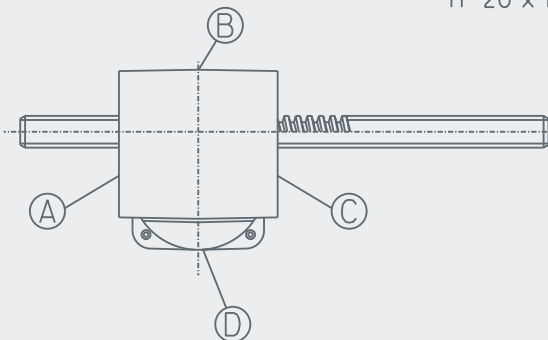
a = Fork joint length  
 x = Free spindle length  
 A, B, C, D = Cable outlet  
 V = Vertical fork joint  
 H = Horizontal fork joint



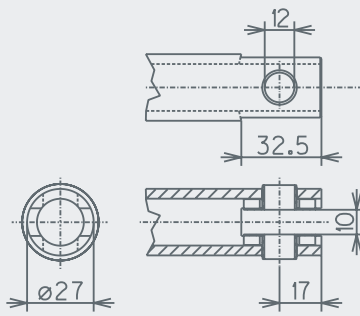
S 56 with continuous spindle



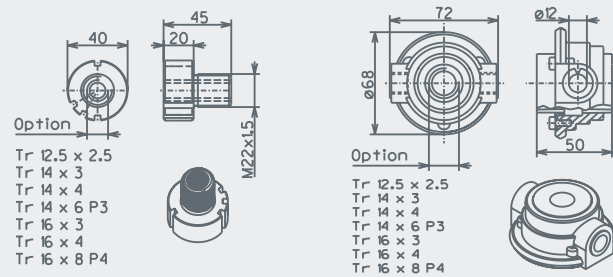
A, B, C, D = Cable outlet



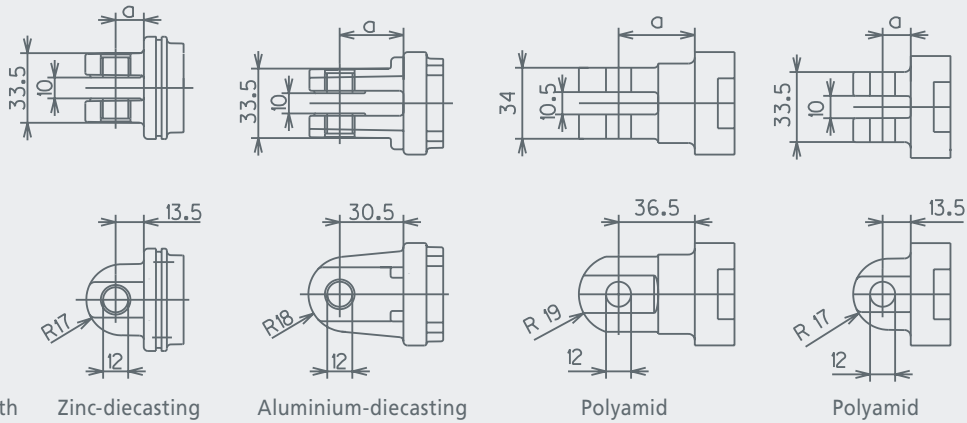
Option: Travel tube S 56



Option: Spindle nut S 56



Option: Fork joint S 56 / SH 56



SH 56

